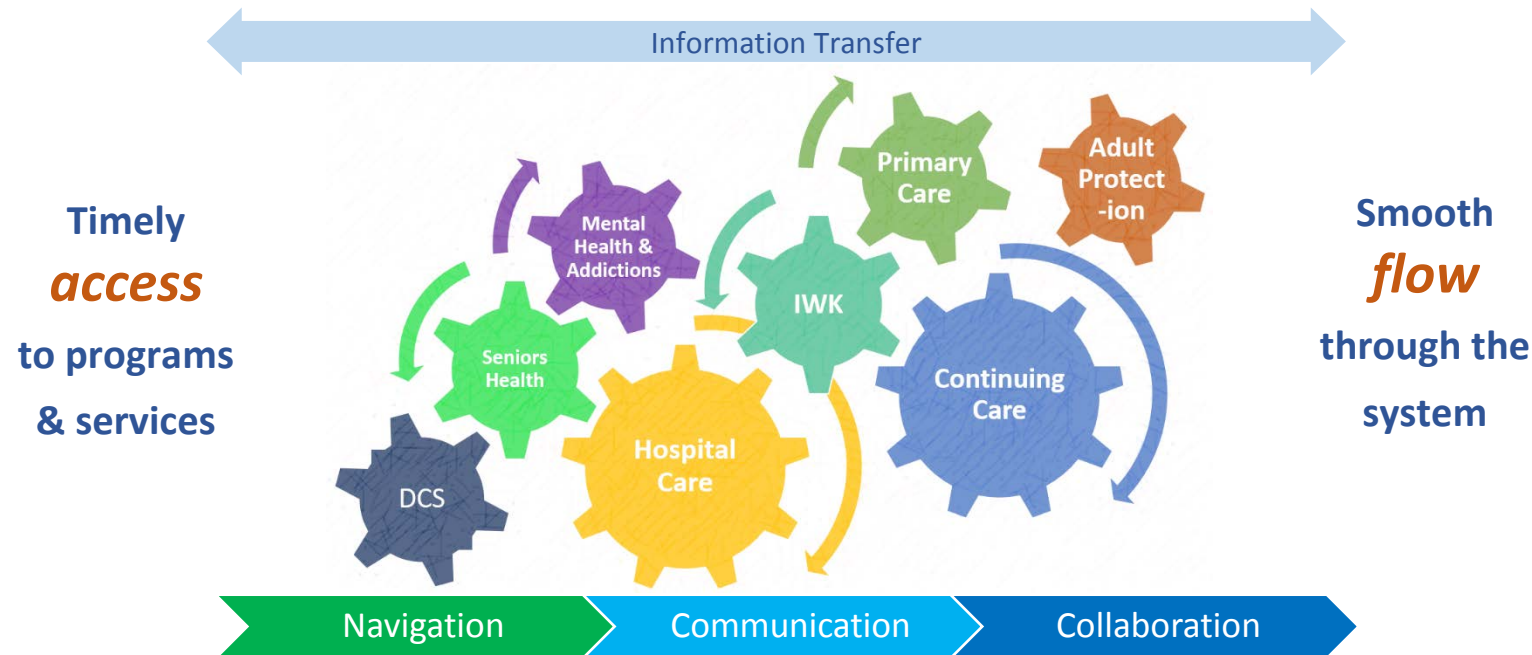


# Working Together to Improve Transitions of Care across the Continuum

Continuing Care Spring Forums  
June 2018



## HOME FIRST GUIDING PRINCIPLES

- ❖ Life changing decisions are better made in the home.
- ❖ People can choose to live at risk at home and in the community.
- ❖ Institutionalized care presents risks that are not as prevalent in the home setting.
- ❖ Individuals and families have a role in partnering with health care providers to care for their loved ones.
- ❖ Evaluate each individual based on their needs without any bias towards age.

Source: *Sharing Best Practices: Transition Management in Ontario Home First Implementation Guide & Tool Kit February 2011.*

## ACUTE MEDICINE

### PLANNING GUIDING PRINCIPLES

**Safety.** The services must place a premium on patient/client safety.

**Population Focus.** The services being provided must be relevant to the group of people being served.

**Accessibility.** The services must be timely and equitable.

**Supportive of Healthy Workplace Culture.** The services should respect employee wellness, recognizing that a healthy workplace is an important element of the quality of care.

**People-Centered.** The services must prioritize the perspectives and experience of patients/clients and their families.

**Continuity.** The services must be coordinated and seamless.

**Effectiveness/Efficiency/Sustainability.** The services must lead to the best possible results using the fewest resources feasible, for today and into the future.

**Learning and Excellence.** Focus on accepted standards of care for given clinical circumstances with the right provider in the right setting providing the right care. Regardless of where care is delivered, there is a level of expected service. Focus on academic principles of learning, measurement, and evaluation across NSHA.