



NSHA Northern Zone Continuing Care Fall Forum

FRIDAY NOVEMBER 3, 2017

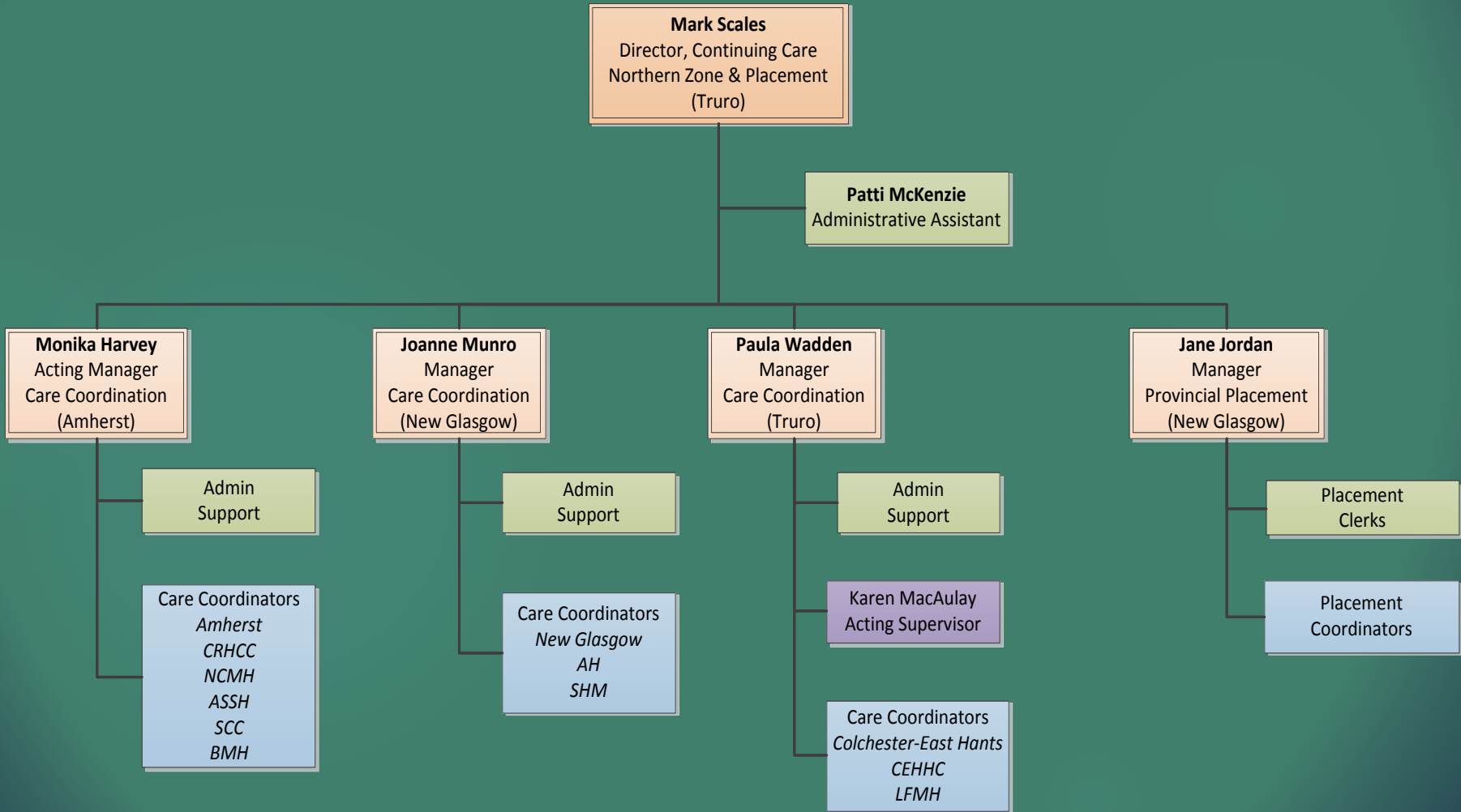
IT'S COMING...





NORTHERN ZONE

Continuing Care Organizational Chart



NSHA NZ Accreditation 2017 – Case Management

- ▶ Week of October 15 – 21, 2017
- ▶ Accreditation Canada Surveyors on site on October 18th, 2017
- ▶ Visited our Continuing Care Program at our Truro site.
- ▶ The surveyor conducted an “Episode of Care” review
- ▶ ROP’s for Case Management were all met – medication reconciliation; Information Transfer and Home Safety Risk Assessment.
- ▶ Kudos: CC Staff who demonstrated leadership, were honest and presented knowledgeable, competent CC practice

NSHA Accreditation 2017

Strengths:

- ▶ Home First Program
- ▶ Orientation of Continuing Care Staff
- ▶ Strong Community partnerships and linkages

Opportunities:

- Consistency in our Performance Appraisal process
- Multiple patient charts
- Awareness of the NSHA Ethics Framework



Mark's Fall Visit LTC Schedule...

Visits with Nursing Homes in each Health Zone across the Province...

Northern Zone

- Debert Court; Willow Lodge; High Crest Springhill; East Cumberland Lodge; The Mira

Central Zone

- Melville Lodge; St. Vincents; The Admiral; Peter's Place; Oakview Terrace

Western Zone

- Mahone NH; The Meadows; Wolfville NH

Eastern Zone

- Waterford NH; Victoria Haven; Harbourstone; Richmond Villa; Port Hawkesbury NH

Listening collectively for what is being called for...

- Physician/Primary Health Care Coverage
Care By Design; Stipend arrangements; NP's
- Responsive Behaviors/Behavioral Health Program/"The New Senior"
- Applicant Refusals
- Mental Health Support
- Staffing/Patient ratios; Staffing Models and secession planning; Recruitment and Retention
- Clinical Care Leadership
- Models of Care i.e.: Eden Model
- Secure Buildings



"Space, the final frontier..." USS Enterprise

Copyright Wikipedia.org, November 1, 2017



Additional LTC visits and starting RCF visits in the Spring 2018...