



## **Understanding the 'Challenge' in 'Challenging Behaviours' as an Opportunity to Enrich Person and Family-Centred Care**

Dr. Katie Aubrecht

Canadian Institutes of Health Research (CIHR)

Health System Impact Postdoctoral Fellow

Continuing Care - Research

# Acknowledgements



**Disclaimer:** Views represented in this presentation are my own and do not reflect the opinions of NSHA Continuing Care – Research or the NSCA, MSVU.



# Overview

- Prioritizing dementia care
  - the critical health challenge of providing person-and family-centred care for older adults with a dementia and/or mental health condition and their care partners
- From vision to practice
  - Previous research
  - Postdoctoral research with NSHA Continuing Care
- How it matters to you
- What you can do to help

# **“Persons by Proxy: Social Construction of Dementia in Person-Centred Care” (2013-16)**

## **Person-Centred Dementia Care**

- Quality of publicly funded care for people with dementia (PWD) & family/friend caregivers

## **Social History of Nursing Homes in Nova Scotia**

- Individualized care a mechanism of horizontal institutionalization

## **Disability Inclusion Lens**

- Lack of attention to perspectives of PWD (esp. if responsive)

## **Evaluation/Indicators**

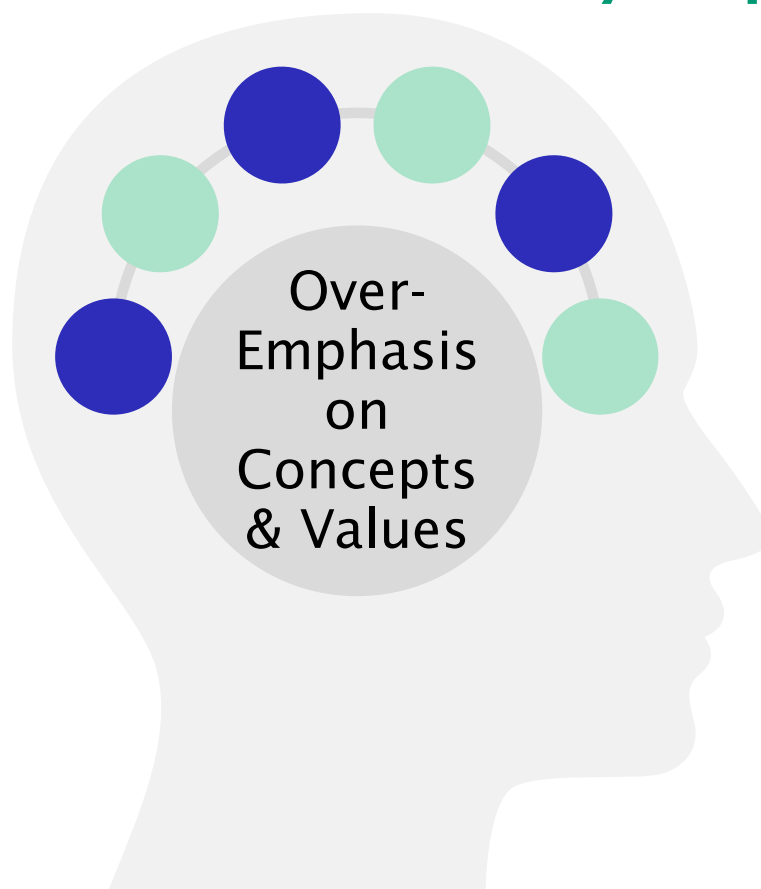
- Inappropriate prescribing/drugging
- Mental health & dementia care literacy
- Focus on work/lack of awareness of work PWD & caregivers do

# WHAT I WOULD HAVE DONE DIFFERENTLY


Theoretical / Aspirational

Greater Consideration of **What Actually Happens in Practice**

Start with  
**Needs  
Assessment** -  
Interviews with  
Administrators  
and Site Visits



More Attention  
to Actual  
Effects of  
Existing  
Dementia/  
Mental Health  
**Education &  
Literacy**  
Programs



What does a person- and family-centred approach to challenging behaviours in dementia look like in practice, at the service delivery level?

A partnership to support research informed continuing care policy in Nova Scotia

## **NSHA POSTDOCTORAL RESEARCH (2017-19)**

# The National Cohort



47 Fellows



36 health system host partner organizations



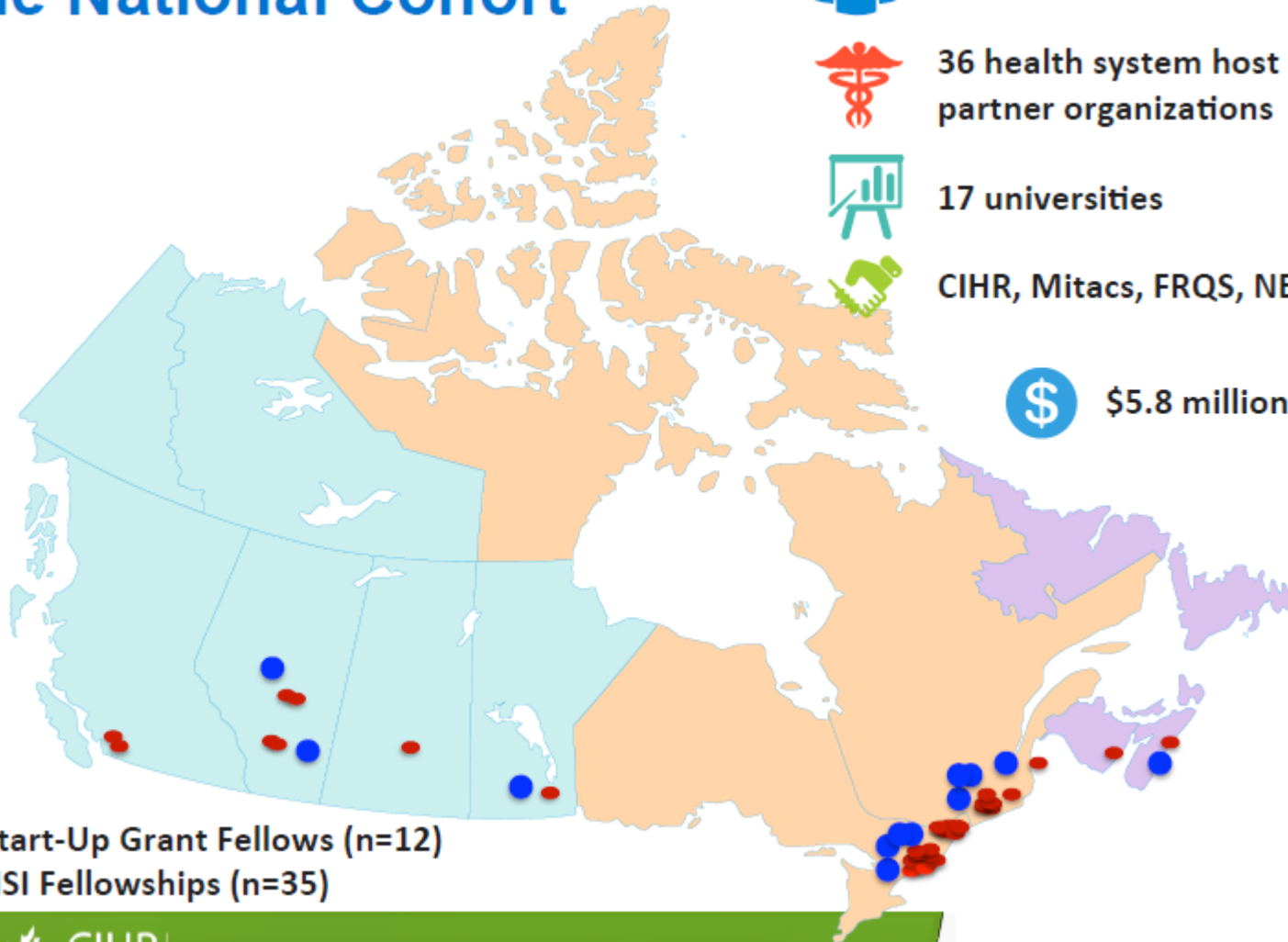
17 universities



CIHR, Mitacs, FRQS, NBHRF



\$5.8 million



● Start-Up Grant Fellows (n=12)

● HSI Fellowships (n=35)



Discoveries for life



Culture and diversity

Local histories

Organizational culture and norms

Rurality

Staff and care partner training

## What does *consistency* mean in a provincial context?

**Map differences within & across geographies, care settings & client/resident/carer populations**

Access to resources

Determinants of health

Client/resident characteristics

Environmental contexts

Scope of practice

Case mixes

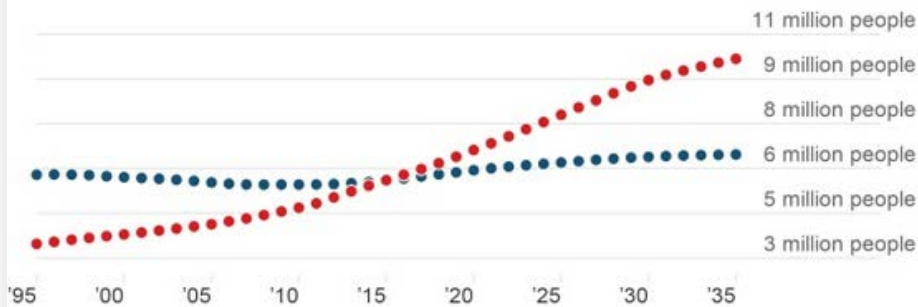


# Population Aging

**Chart 6**  
**Proportion of the population aged 85 and older, Canada, provinces and territories, 2016**  
 percent

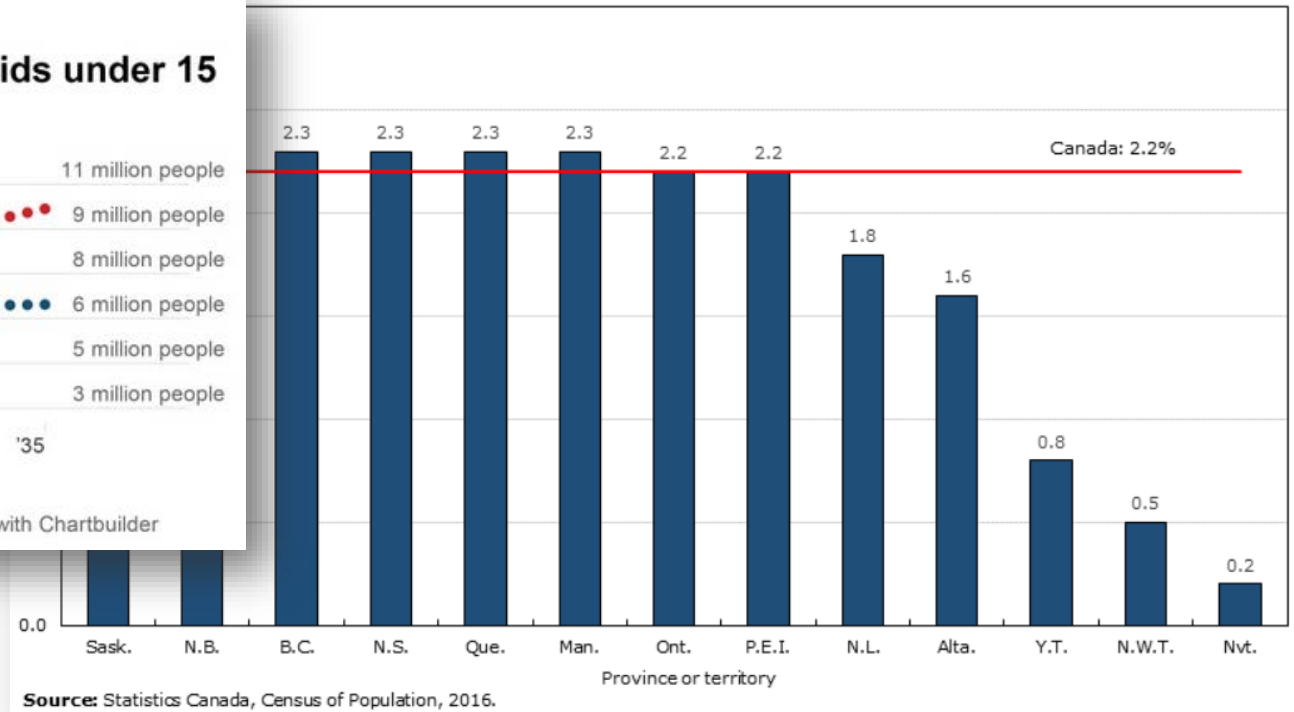
## Canada now has more seniors than kids under 15

■ Under 15 ■ Over 64



Source: Statistics Canada

Made with Chartbuilder



Source: Statistics Canada, Census of Population, 2016.

# The issue with dementia/mental health and illness

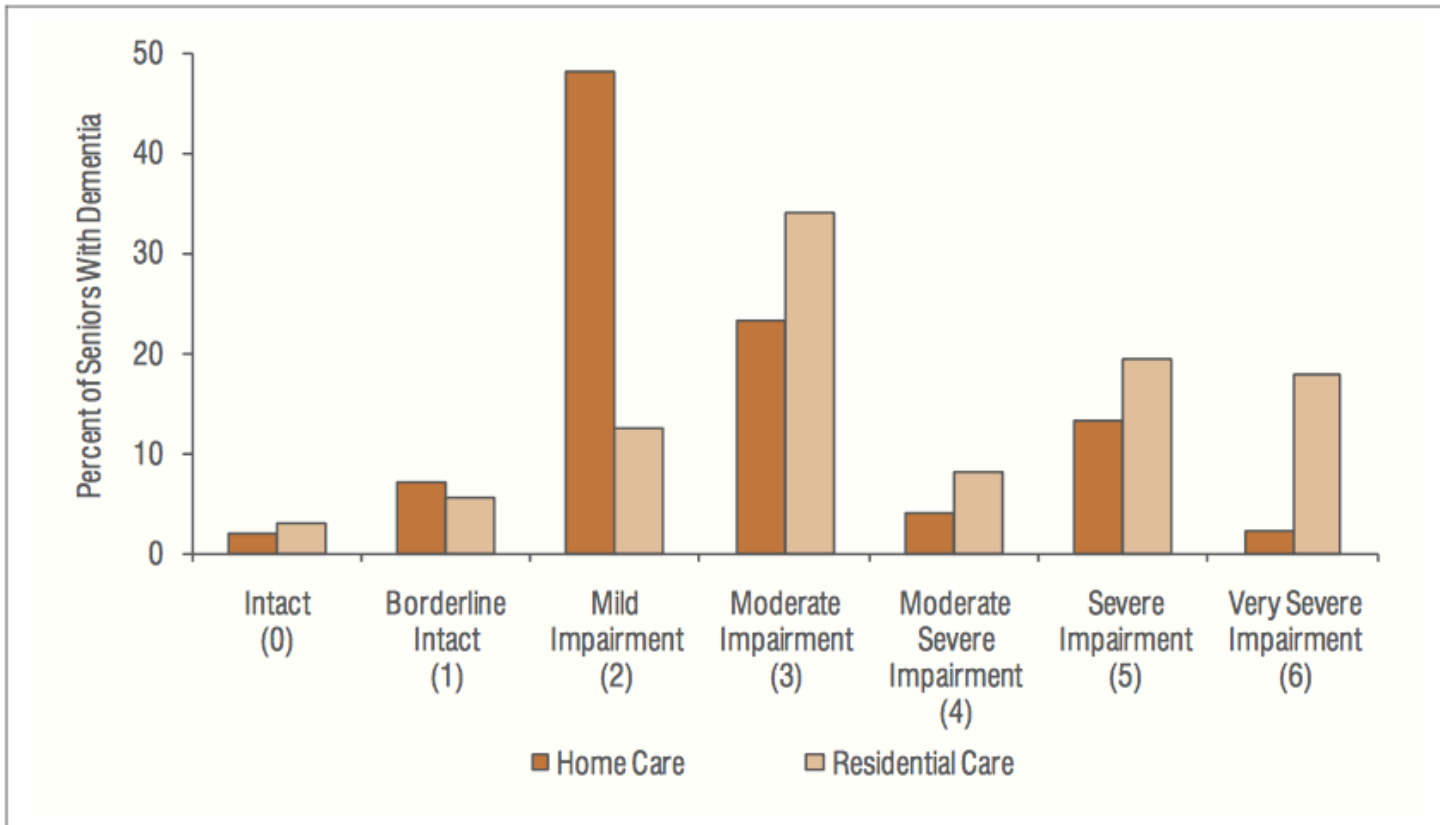
1.8million+ people 60 years and older lived with a mental health problem in 2016

Need to account for changing needs of older adults living with mental health problems and illnesses



Figure 2

Cognitive Impairment by Care Setting Among Seniors With Dementia

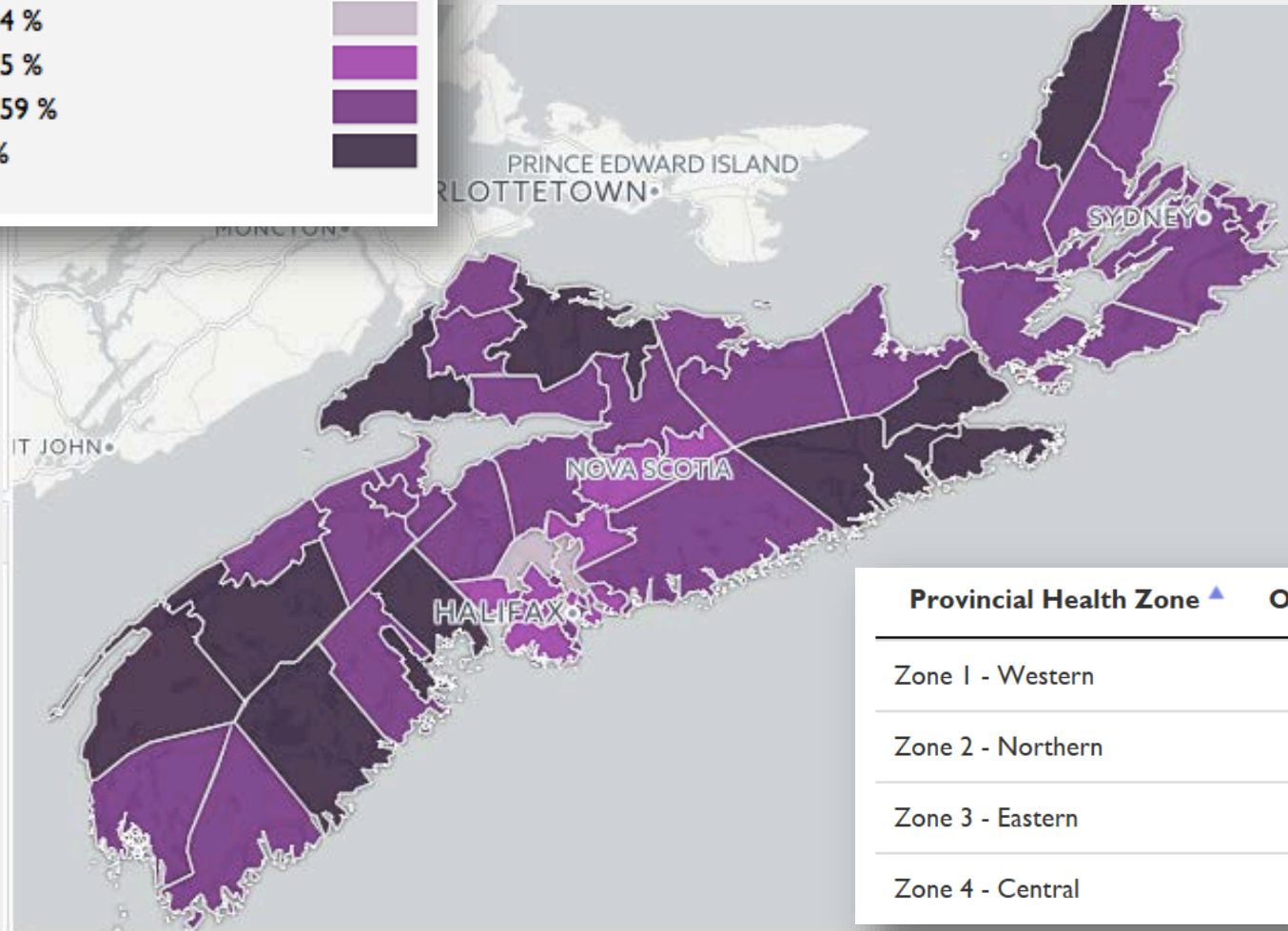


Sources

Home Care Reporting System, 2007–2008, and Continuing Care Reporting System, 2008–2009, Canadian Institute for Health Information.

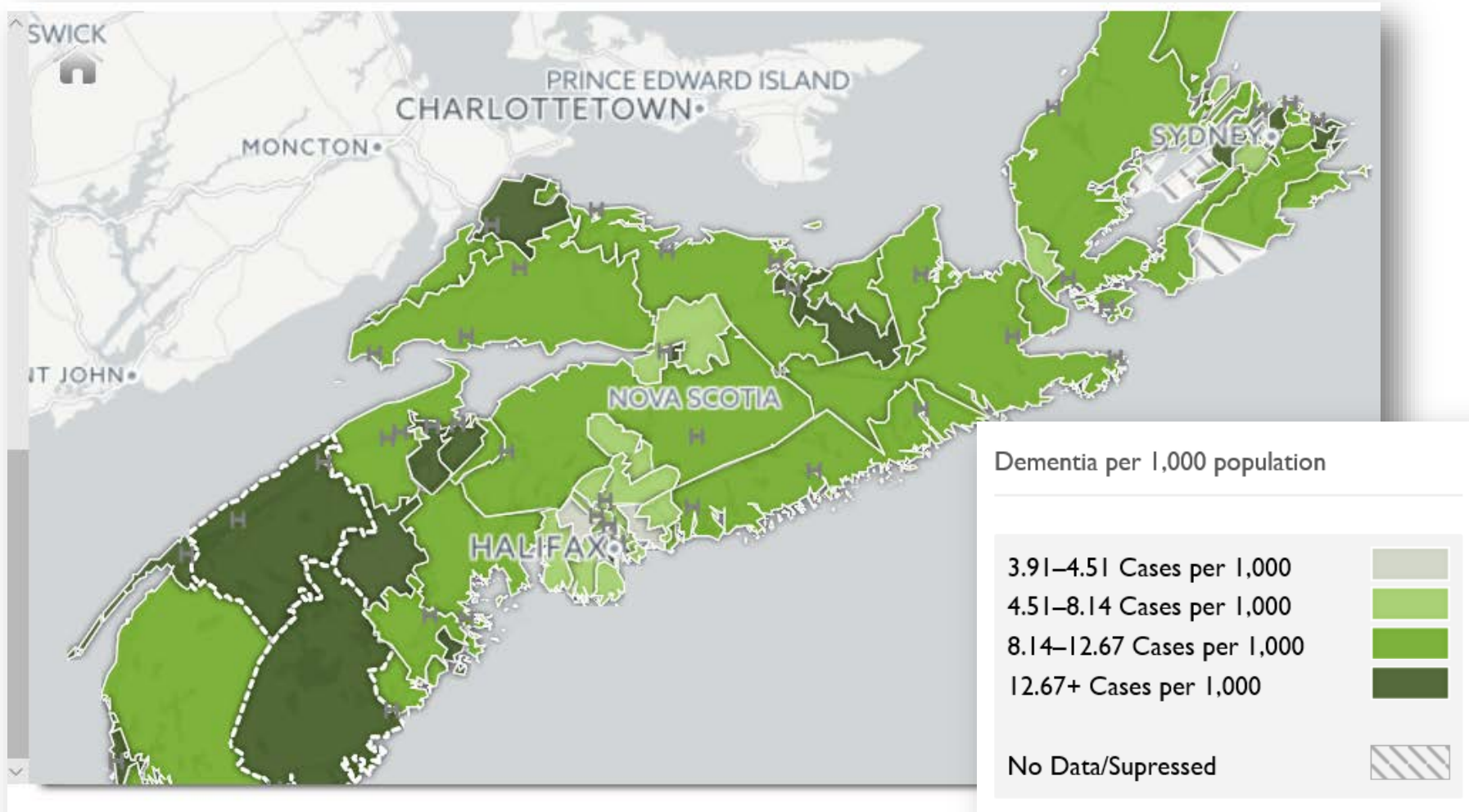
Percentage of population over 65

8.68–9.84 %  
 9.84–15.5 %  
 15.5–21.59 %  
 21.59+ %



Provincial Health Zone ▲	Over 65 (%) ◆
Zone 1 - Western	20.11
Zone 2 - Northern	17.81
Zone 3 - Eastern	19.44
Zone 4 - Central	13.22

Percentage of population over 65



Dementia per 1,000 population

# PHASE 1

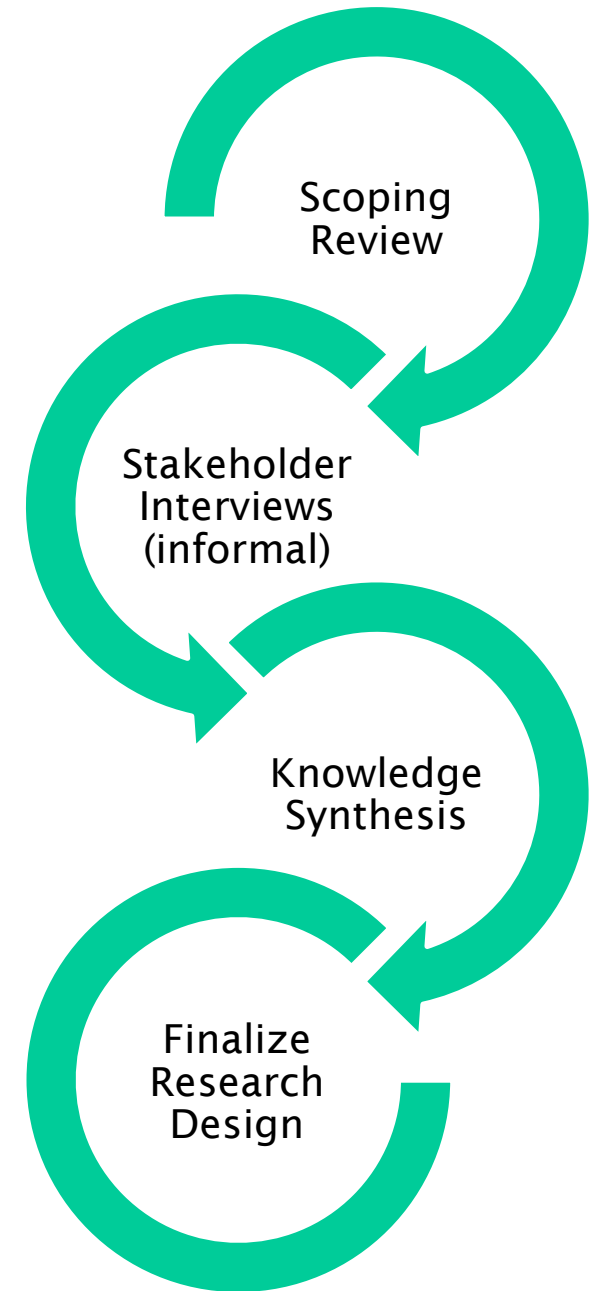
Multi-method, multi-perspective citizen engaged research design

Not going in with a solution

Understand issue by mapping existing solutions

- Problem definitions?
- Goals?
- Unintended consequences?

New vantage point, new questions



## PHASE 2

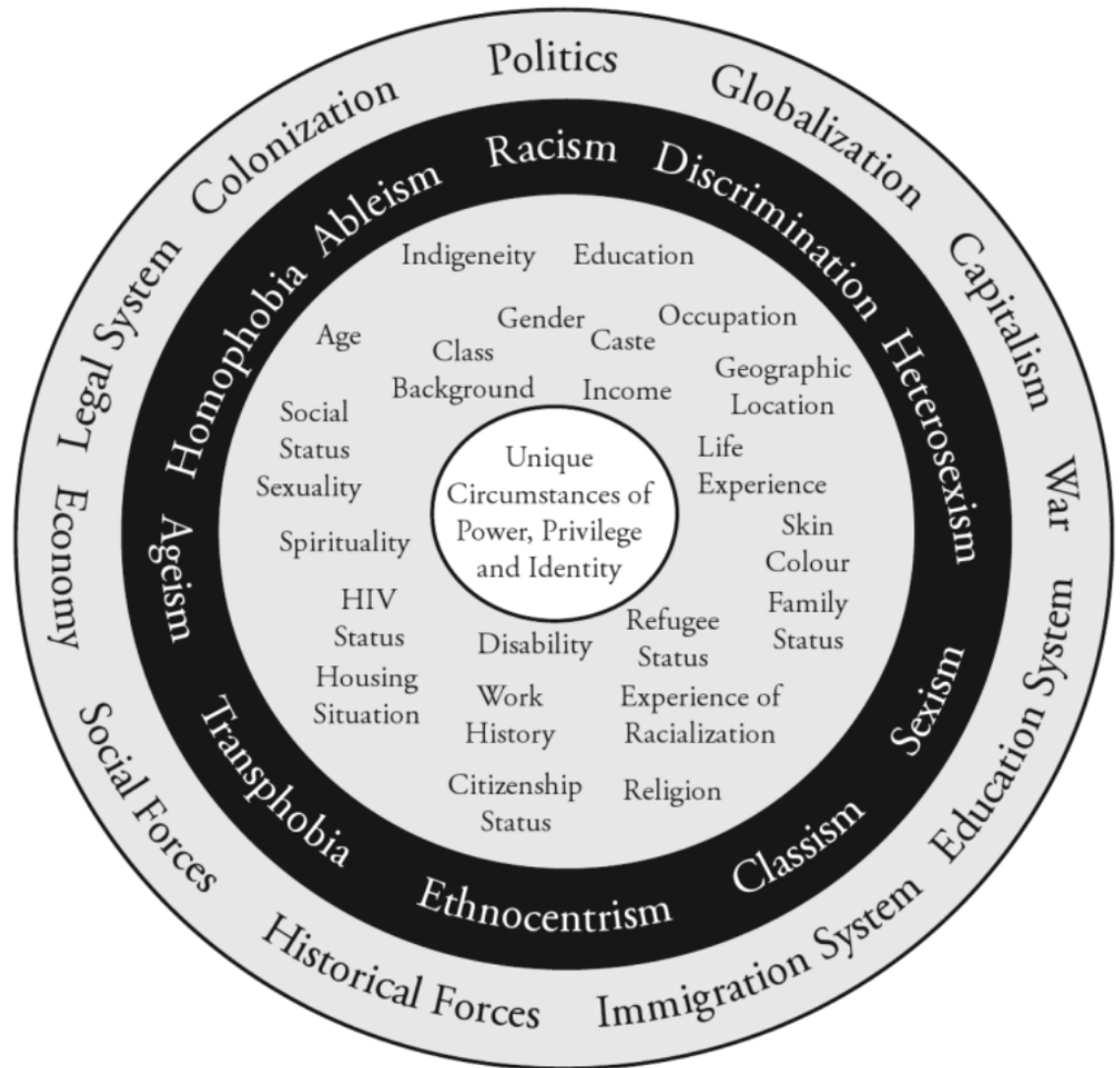
Comparative  
case studies  
central &  
rural

Identify &  
measure  
client &  
system level  
outcomes

Report &  
engage:  
workshops &  
webinars

# INTERSECTIONAL Framework

Intersecting Identities, Structures, Environments & Contextual Factors









# How this Project Matters to You

Opportunity to share your experiences and perspectives, with potential to inform the research design.

Identify the contexts and characteristics that shape dementia/mental health care practice at the service delivery level.

Share and translate knowledge of best practice information into system change.

Enhance understanding of individual, provider and system capacities.

# How You Can Help

**Share your story of dementia/mental health care for older adults with complex care situations that involve responsive behaviours.**

Is this cohort of clients/residents and their care partners being engaged in practice change initiatives in your care environment/ community?

- How are they being engaged?
- If they aren't, what reasons are given?
- How are enablers of engagement being supported/barriers addressed?



# Thanks!

# Questions?

[katie.aubrecht@nshealth.ca](mailto:katie.aubrecht@nshealth.ca)

Mumford Professional Centre  
6960 Mumford Road, Suite 2069  
Halifax, NS B3L 4P1  
Cell: 902-240-9267