

IMPLEMENTATION OF NEW BLOOD BAGS

TROUBLESHOOTING TIPS



1. **Do not over spike.** Over-spiking will result in the inability to remove the set.

2. **Always insert/remove spike using 1/4 turn motions.** Pulling the spike in a straight downward motion will result in the tightening of the port on the spike.

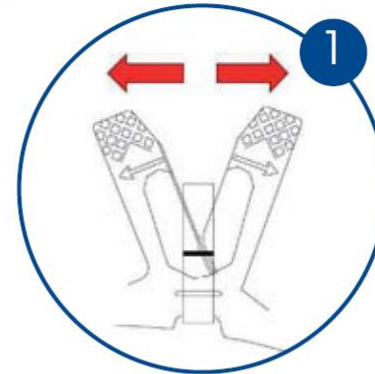


info@macopharma.ca



Canadian Blood Services
Société canadienne du sang

TO ACCESS PORTS ON BLOOD BAG



Using both hands, tear the port protector as indicated.

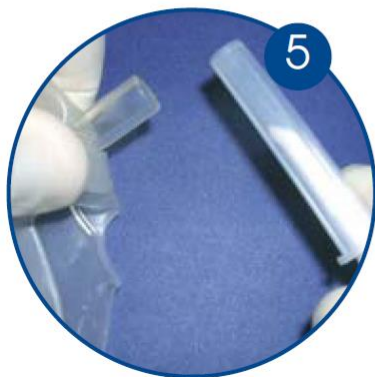


Peel top side of port protector downward towards the bag.



Hold down the port protector tabs folded with one hand to reveal the tip of the port.

TO SPIKE THE BLOOD BAGS



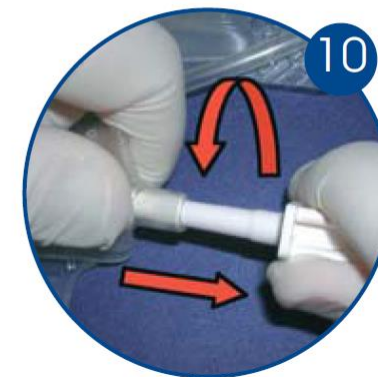
Grasp port at site of folded port protector.
*This stabilizes port during spiking.



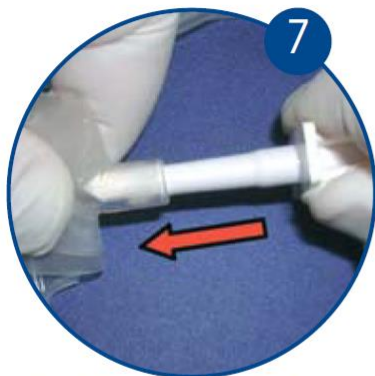
With dominant hand grasp the blood set below tip of spike. Remove cap.



Remove blood bag from IV pole. Close on/off clamp. Grasp port between thumb and index finger using your non-dominant hand.



With dominant hand, grasp spike and twist $\frac{1}{4}$ turns in counterclockwise direction as pulling outward.



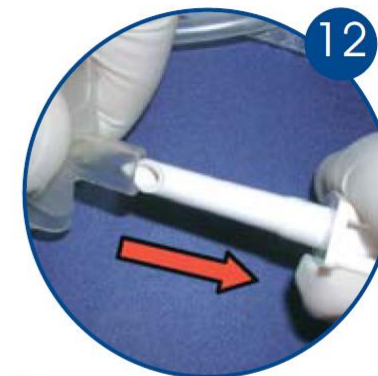
Insert spike firmly into bag port up to the septum in the port.



Continue to insert spike into port using two $\frac{1}{4}$ clockwise turns or until the septum has been pierced.



Continue to twist in $\frac{1}{4}$ turn segments as you pull out the spike.



Once spike is loosened from port, remove by pulling straight down.

DO NOT OVERSPIKE